

THE BEST OF ABBA

(Overture/Prologue • Mamma Mia • I Have A Dream • Dancing Queen)

CELLO

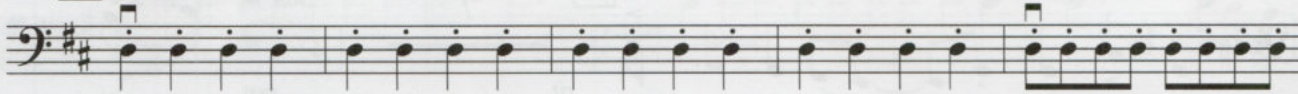
Arranged by TED RICKETT

"Overture/Prologue"
Moderately Fast

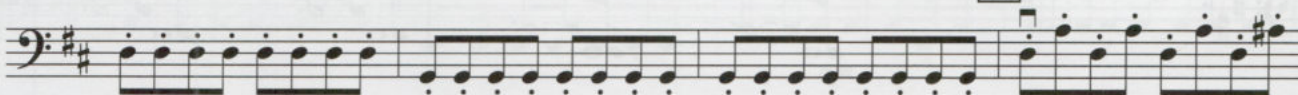


8 Faster Rock

12 "Mamma Mia"



20

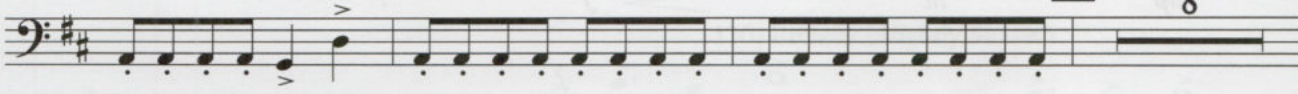


28



32

8



OVERTURE/PROLOGUE

Words and Music by BENNY ANDERSSON, BJORN ULVAEUS and STIG ANDERSON
Copyright © 1975 UNION SONGS MUSIKFORLAG AB

Copyright Renewed

This arrangement Copyright © 2004 UNION SONGS MUSIKFORLAG AB
All Rights in the United States and Canada Controlled and Administered by
UNIVERSAL-SONGS OF POLYGRAM INTERNATIONAL, INC. and EMI GROVE PARK MUSIC, INC.
All Rights Reserved Used by Permission

MAMMA MIA

Words and Music by BENNY ANDERSSON, BJORN ULVAEUS and STIG ANDERSON
Copyright © 1975 UNION SONGS MUSIKFORLAG AB

Copyright Renewed

This arrangement Copyright © 2004 UNION SONGS MUSIKFORLAG AB
All Rights in the United States and Canada Controlled and Administered by
UNIVERSAL-SONGS OF POLYGRAM INTERNATIONAL, INC. and EMI GROVE PARK MUSIC, INC.
All Rights Reserved Used by Permission

I HAVE A DREAM

Words and Music by BENNY ANDERSSON and BJORN ULVAEUS
Copyright © 1979 UNION SONGS MUSIKFORLAG AB

Copyright © 2004 UNION SONGS MUSIKFORLAG AB

This arrangement Copyright © 2004 UNION SONGS MUSIKFORLAG AB
All Rights in the United States and Canada Controlled and Administered by
UNIVERSAL-POLYGRAM INTERNATIONAL PUBLISHING, INC. and EMI WATERFORD MUSIC, INC.
All Rights Reserved Used by Permission

DANCING QUEEN

Words and Music by BENNY ANDERSSON, BJORN ULVAEUS and STIG ANDERSON
Copyright © 1977 UNION SONGS MUSIKFORLAG AB

Copyright Renewed

This arrangement Copyright © 2004 UNION SONGS MUSIKFORLAG AB
All Rights in the United States and Canada Controlled and Administered by
UNIVERSAL-SONGS OF POLYGRAM INTERNATIONAL, INC. and EMI GROVE PARK MUSIC, INC.
All Rights Reserved Used by Permission

04626288

The Best Of ABBA - 1

40 *f*

50 *rit.* *Soli* *mp* 7

"I Have A Dream"
58 Easy Ballad Style

58 *V*

66 *div.* *mp* (□) *End Soli V*

74 *mf*

(□)

82 *mp* *rit.* *div.* (□) 86 *f* "Dancing Queen" *Disco*

V

94 *V*

CELLO

First musical staff in bass clef, key signature of two sharps (F# and C#). It contains a sequence of eighth and sixteenth notes with various articulations including accents (^) and breath marks (v).

Second musical staff in bass clef, continuing the melodic line with eighth and sixteenth notes and articulations.

Third musical staff in bass clef, starting with measure 104. It features a dynamic marking of *f* and includes sixteenth-note passages with accents and breath marks.

Fourth musical staff in bass clef, continuing the melodic line with eighth and sixteenth notes and articulations.

Fifth musical staff in bass clef, starting with measure 114. It includes a dynamic marking of *f* and features eighth-note passages with accents and breath marks.

Sixth musical staff in bass clef, continuing the melodic line with eighth and sixteenth notes and articulations.

Seventh musical staff in bass clef, starting with measure 122. It includes a dynamic marking of *f* and features eighth-note passages with accents and breath marks.

Eighth musical staff in bass clef, continuing the melodic line with eighth and sixteenth notes and articulations.

Ninth musical staff in bass clef, starting with measure 130. It includes the instruction "Broadly (Slightly Slower)" and a dynamic marking of *rit.* It features a sequence of notes with accents and breath marks.

Tenth musical staff in bass clef, continuing the melodic line with eighth and sixteenth notes and articulations. It ends with a dynamic marking of *sfp* and a breath mark (v).